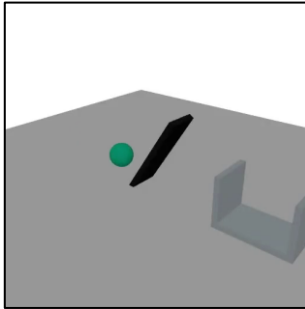
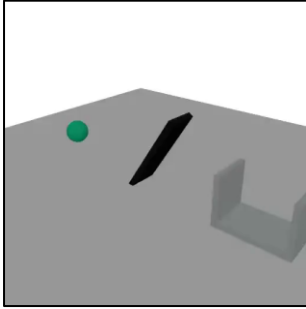
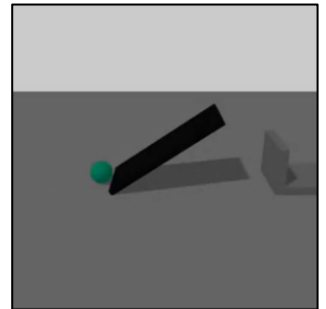
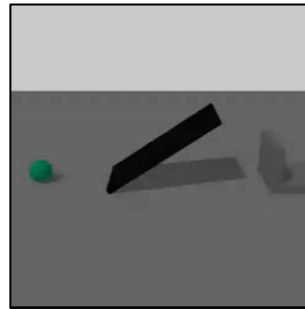


Case Study 7

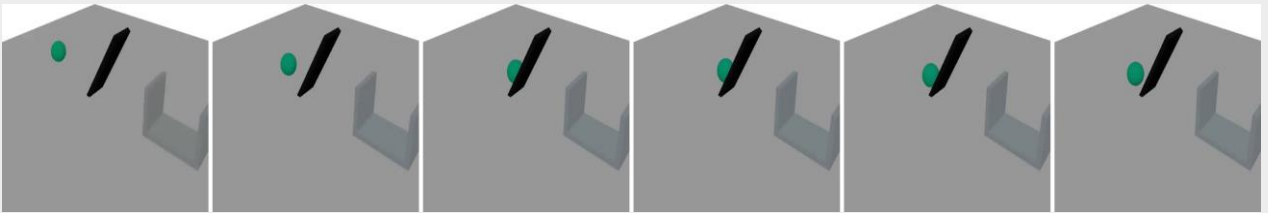
Task: You are a coding-focused assistant whose primary job is to OUTPUT RUNNABLE CODE. Your response MUST ALWAYS include executable code. Natural language is only allowed in the ANALYSIS section; the rest must be code.....



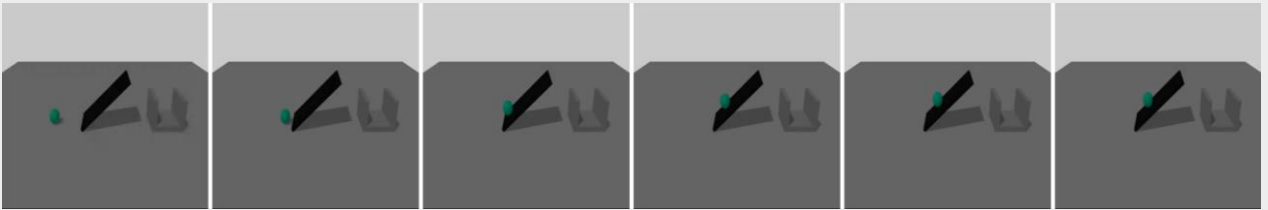
GT Input frame 1 &10



Generated Output frame 1 &10



GT Video



Generated Video

Model Analysis: The scene is set on a large, flat, grey ground plane. In the center, a black rectangular ramp is inclined upwards from left to right, acting as a launchpad. To the right of the ramp, there is a static grey structure shaped like a U-channel or open container, consisting of a bottom slab and two vertical walls (one closer to the ramp, one further away).....

GT Analysis: The scene is set on a flat, light gray rectangular platform that serves as the ground plane. Near the right side of the platform there is a U-shaped.....Closer to the center of the platform lies a long, thin, black rectangular plank or wedge resting on the surface and oriented diagonally, with its left end closer to the viewer and its right end pointing slightly away.....There is one clearly dynamic object: a small green sphere positioned