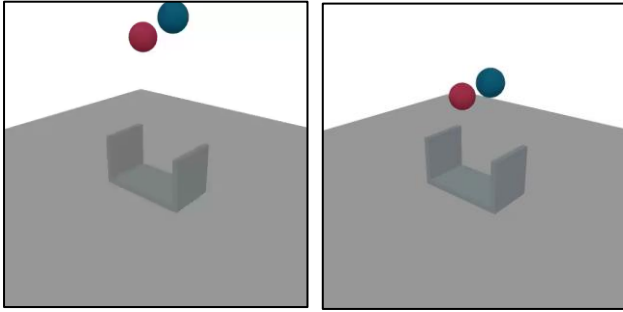
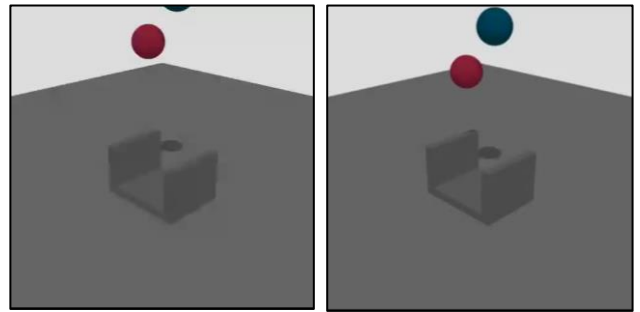


Case Study 8

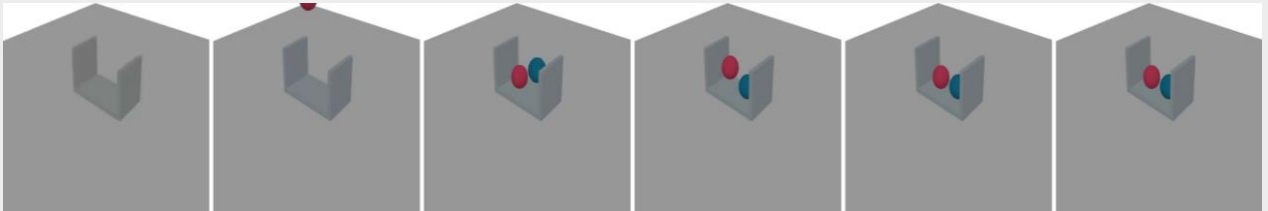
Task: You are a coding-focused assistant whose primary job is to OUTPUT RUNNABLE CODE. Your response MUST ALWAYS include executable code. Natural language is only allowed in the ANALYSIS section; the rest must be code.....



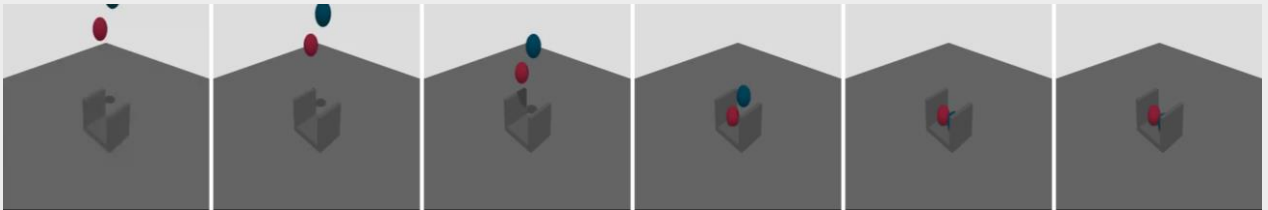
GT Input frame 1 & 10



Generated Output frame 1 & 10



GT Video



Generated Video

Model Analysis: The scene consists of a static grey environment featuring a large ground plane and a U-shaped container (trough) resting on it. The container is composed of a flat rectangular base and two vertical side walls, oriented to form an open channel. Two dynamic spheres are suspended in mid-air above the container. The first is a reddish-pink sphere positioned lower.....

GT Analysis: The scene consists of a large, flat, gray rectangular ground plane occupying most of the view. Near the center of this plane there is a U-shaped static structure made of the same gray material..... There are two dynamic objects, both spheres. One sphere is red and the other is blue..... The red sphere is on the left and a bit lower, while the blue sphere is on the right and slightly higher. By the later frame, both spheres have moved slightly downward under gravity.....